

KGS-250AH/250AHD*/250MS1

KENT INDUSTRIAL CO., LTD.

Overall Description

KGS-250MS1

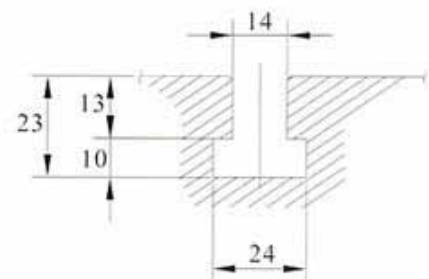
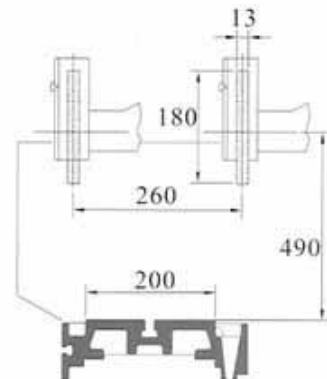
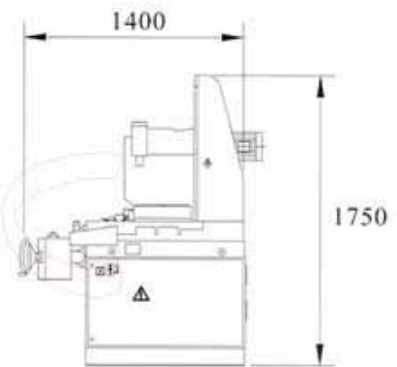
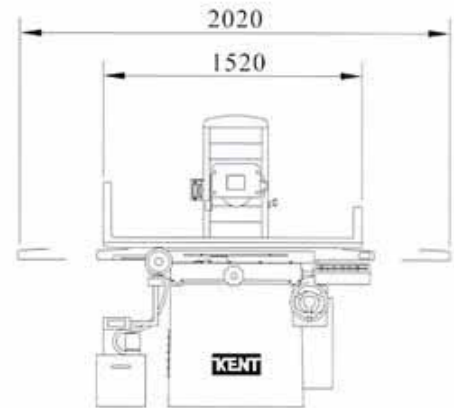


KGS-250MS1(CE)



- The unique design of the saddle with feed nut on top of the base, makes this machine accurate in alignment regardless saddle/base location.
- The Heavy cross ribbed column works with heavy walled base and saddle make this an extremely rigid machine.
- Our wheel guards are gravity casting with special Aluminum alloy to offer extra strength for safety.
- MS1: Vertical feed is driven by AC servo motor, encoder & ballscrew. programmable for rough/fine downfeed, sparkout & retraction. MPG provides convenient manual up/down at 0.0001"(x1) or 0.001"(x10).

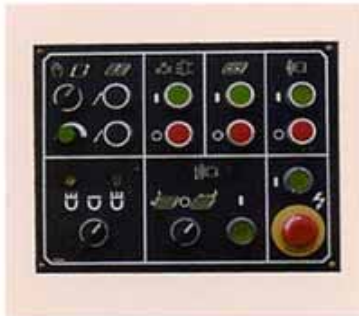
Principle Dimensions



Machine Features



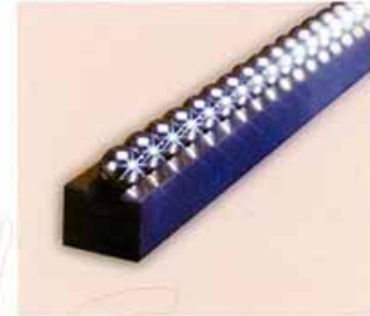
Widely double "V" slideway coated with turcite B and accurately scraped to assure smooth cross feed of the saddle.



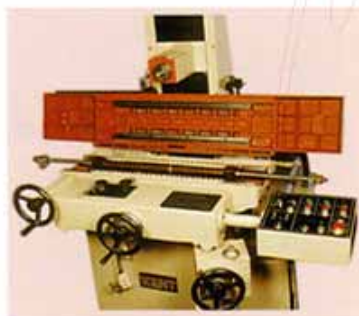
- 250 H mode for hydraulic table movement and most suitable for skill-oriented operation.
- 250 AH provides power cross-feed to further enhance productivity.
- 250 AHD provides autodec feed for fully automatic operation.



Separate hydraulic unit avoids the transmission of heat or vibration to the machines which is essential for high precision machinings.



Hardness HRC-63 slide way to be in tune with high precision steel balls is used in KGS-250 series longitudinal feed.



Ball bearing table slideways are used on 250 series for smooth and light movement with extra precision.



Both cross-feed and down-feed can be equipped with micro-feed mechanism to provide 0.001mm incremental as optional.



High precision cartridge type wheel spindle with super precision angular contact ball bearings assure accurate grinding performance, bearings are lubricated by grease for life.

STANDARD ACCESSORIES

1. Grinding wheel
2. Wheel balancing arbor
3. Wheel balancing stand
4. Tool box & tools
5. Levelling pad and bolt
6. Wheel flange and flange extractor
7. Wheel dressing diamond tip & holder
8. Table splash guard
9. Lubricator

OPTIONAL ACCESSORIES

1. Coolant tank
2. Dust-suction coolant system
3. Coolant tank with magnetic separator
4. Manual parallel dresser
5. Electro inclinable chuck
6. Electro magnetic chuck
7. Demagnetize
8. Quartz light
9. Extra wheel flange

| Specification | | Unit | KGS-250AH | KGS-250AHD | KGS-250MS1 | |
|----------------------|-------------------------------------|-----------------|-------------|------------------|------------------|------------------|
| Capacity | Overall table working area | mm | 460 X 200 | 460 X 200 | 460 X 200 | |
| | Longitudinal table travel | mm | 540 | 540 | 540 | |
| | Cross feed table travel | mm | 260 | 260 | 260 | |
| | Distance spindle center to table | mm | 475 | 475 | 475 | |
| | Table load including magnetic chuck | kes | 100 | 100 | 100 | |
| Table & cross feed | T-slot | mm x N | 14 X 1 | 14 X 1 | 14 X 1 | |
| | Longitudinal table speed | m/min | 5-25 | 5-25 | 5-25 | |
| | Cross feed on hand wheel | l.gra. | mm | 0.02 | 0.02 | 0.02 |
| | | l.rev. | mm | 4 | 4 | 4 |
| | Auto cross feed per stroke | mm | 0.1-12 | 0.1-12 | 0.1-12 | |
| | Power cross feed | 50 hz | mm/min | 820 | 820 | 820 |
| | | 60 hz | mm/min | 980 | 980 | 980 |
| | Grinding wheel | Wheel dimension | mm | 180 X 13 X 31.75 | 180 X 13 X 31.75 | 180 X 13 X 31.75 |
| Spindle speed | | 50 hz | r.p.m | 2850 | 2850 | 2850 |
| | | 60 hz | r.p.m | 3480 | 3480 | 3480 |
| Vertical movement | Vertical on handwheel or-MPG X 1 | l.gra. | mm | 0.01 | 0.01 | 0.001 |
| | | l.rev. | mm | 2 | 2 | 0.1 |
| | Auto down feed elevation | mm | | 0.002-0.02 | 0.001-0.2 | |
| | Power head elevation | 50 hz | mm/min | | | 300 |
| 60 hz | | mm/min | | | | |
| Motor | Spindle motor | HP x p | 2 X 2 | 2 X 2 | 2 X 2 | |
| | Power elevation motor | W | | | 400(AC srev) | |
| | Hydraulic motor | HP x p | 1 X 4 | 1 X 4 | 1 X 4 | |
| | Dust collection motor | HP x p | 1/2 X 2 | 1/2 X 2 | 1/2 X 2 | |
| | Coolant motor | HP x p | 1/8 X 2 | 1/8 X 2 | 1/8 X 2 | |
| | Cross feed motor | HP x p | 1/20 X 6 | 1/20 X 6 | 1/20 X 6 | |
| Dimension and weight | Machine height | mm | 1775 | 1775 | 1775 | |
| | Floor space | mm | 1800 X 1400 | 1800 X 1400 | 1800 X 1400 | |
| | Net weight | kgs | 1300 | 1300 | 1300 | |
| | Gross weight | kgs | 1500 | 1500 | 1500 | |

Specifications subject to change without prior notice.

KENT

KENT INDUSTRIAL CO.,LTD.